

Starlight Theatre's 2012 Broadway Season

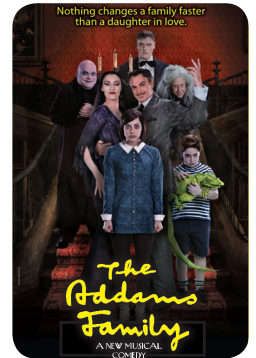


In The Heights - June 5 - 10 at 8pm

IN THE HEIGHTS, the 2008 Tony Award®-winning Best Musical, is a moving, funny and uplifting new show about a community of hard-working immigrants seeking a better life and trying to find their place – their home – in their new country. With a remarkable young cast, thrilling dancing and a dynamic score, **IN THE HEIGHTS** is an exhilarating journey into a vibrant Manhattan community where the coffee is light and sweet, the windows are always open, and the breeze carries the rhythm of three generations of music.
Suitable for most audiences.

The Addams Family - July 3 - 8 at 8pm

THE ADDAMS FAMILY is a smash-hit musical comedy that brings the darkly delirious world of Gomez, Morticia, Uncle Fester, Grandma, Wednesday, Pugsley and, of course, Lurch to spooky and spectacular life. It's every parent's nightmare. Your little girl has suddenly become a young woman, and what's worse, has fallen deliriously in love with a sweet, smart, "normal" young man from a respectable family. This shocking development will turn the Addams house downside up.
Suitable for most audiences.

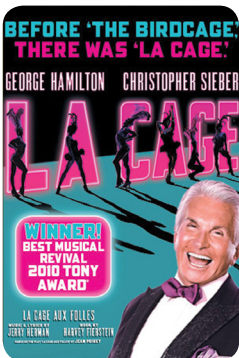
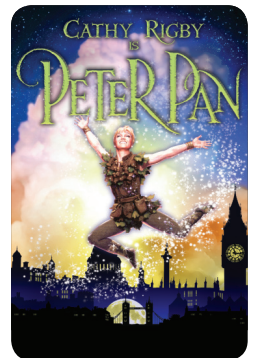


Memphis - July 10 - 15 at 8pm

TURN UP THAT DIAL... From the underground dance clubs of 1950s Memphis, Tennessee, comes a hot new Broadway musical that bursts off the stage with explosive dancing, irresistible songs and a thrilling tale of fame and forbidden love. Winner of four 2010 Tony Awards® including Best Musical, **MEMPHIS** is about a radio DJ who wants to change the world and a club singer who is ready for her big break. Come along on their incredible journey to the ends of the airwaves.
Suitable for most audiences.

Cathy Rigby is Peter Pan - July 24 - 29 at 8pm

Tony Award® nominee Cathy Rigby takes flight in an all-new production of **PETER PAN!** Discover the magic all over again of this two-time Emmy Award-winning and two-time Tony Award®-nominated production. **PETER PAN** is filled with timeless magical moments and a captivating hook. The legend you thought you knew is now the adventure you never dreamed possible...Cathy Rigby is **PETER PAN!**
Suitable for all audiences.



La Cage Aux Folles - August 28 - September 2 at 8pm

Winner of three 2010 Tony Awards® including Best Musical Revival, this hilarious new production of **LA CAGE AUX FOLLES**, starring George Hamilton, tells the story of Georges, the owner of a glitzy nightclub, and his partner Albin, who moonlights as the glamorous chanteuse Zaza. When Georges' son brings his fiancée's conservative parents home to meet the flashy pair, the bonds of this non-traditional family are put to the test as the feather boas fly!
This show depicts alternative lifestyles. Parental guidance recommended.



What is Starlight Theatre?

Presenting Broadway entertainment since 1951, the not-for-profit Starlight Theatre Association is Kansas City's oldest and largest performing arts organization. The Association operates, programs and maintains the largest stage in the United States, as well as the 16-acre Starlight Theatre complex. While assuming all annual operating costs for the complex, the Association also raises funds for capital improvements and a variety of programs, including national Broadway musical performances, concerts, community outreach and education. Since 2000, the Association has contributed more than \$25 million of privately funded improvements to the Kansas City, Mo.-owned Starlight Theatre. Each Broadway season, Starlight donates more than 11,000 tickets to its performances to regional non-profit organizations that serve the disadvantaged.

In 2010, Starlight was pleased to accept several local honors, including: "Favorite Performing Arts Venue" (*KCCVA Visitors' Choice Awards*), "Favorite Concert/Live Music Venue" (*KCCVA Visitors' Choice Awards*), "Best Live Theatre Venue" (*KC Magazine - City's Best 2010 Awards*), "Best Performing Arts Venue" (Gold Award, *Ingram's Best of Business Kansas City Awards*) and "Best Theatre" (Silver Award, *Ingram's Best of Business Kansas City Awards*).

A Brief History

Construction of Starlight Theatre began in December 1949. This landmark outdoor theatre opened in the summer of 1950 with the "Thrills of the Century" pageant gracing the stage in celebration of the City of Kansas City, Missouri's Centennial. The Starlight Theatre Association was formed that same year and began programming and operating the theatre in 1951. *Desert Song* opened Starlight's inaugural season. In the early years, Starlight's season consisted of 10 shows that included a mixture of operettas, light opera and new musical comedies written for the Broadway stage. In recent years, the season has evolved to feature five or six Broadway-style shows, both self-produced and national tours. Contemporary concerts are a part of each summer season as well.



In the early 1980s, the Starlight stage was extended over the orchestra pit, bringing on-stage action closer to the audience. Today's 10-story, climate-controlled Jeannette and Jerome Cohen Community Stage opened in 2000. The \$10.5 million stage enables Starlight to host nationally touring mega-hits. Recent additions to Starlight, thanks to a successful capital campaign, include indoor rehearsal halls, a gift store, expanded concessions and restrooms, and an administrative office building. In 2007, Starlight introduced all new seats, group party pavilions and a new north facade. The theatre seats approximately 8,000 and is located in Swope Park.

2012 Broadway Performance Pricing

Season Tickets*

All 6 shows for one low price!

- A. Side Terrace • **ONLY \$60**
- B. Terrace • \$102
- C. Side Plaza • \$168
- D. Plaza • \$204
- E. Preferred Plaza • \$234
- F. Side Orchestra • \$234
- G. - I. Box, Orchestra, Producer's Circle • Limited availability. Call for information.

5-Show Season Ticket packages and Take Three packages are also available.

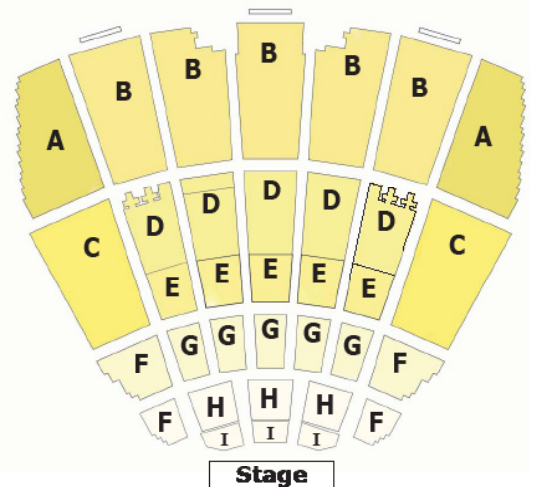
*Includes all applicable service fees.

Single Tickets**

- A. Side Terrace • **ONLY \$10**
- B. Terrace • \$20
- C. Side Plaza • \$35
- D. Plaza • \$43
- E. Preferred Plaza • \$47
- F. Side Orchestra • \$47
- G. Box • \$75
- H. Orchestra • \$85
- I. Producer's Circle • \$85

Special group (15+) rates are also available.

**Additional service fee per ticket may apply.



816.363.STAR(7827)
kcstarlight.com

The 2012 season will also include various concert events throughout the spring, summer and fall. Ticket prices as well as on sale dates will vary for each concert.